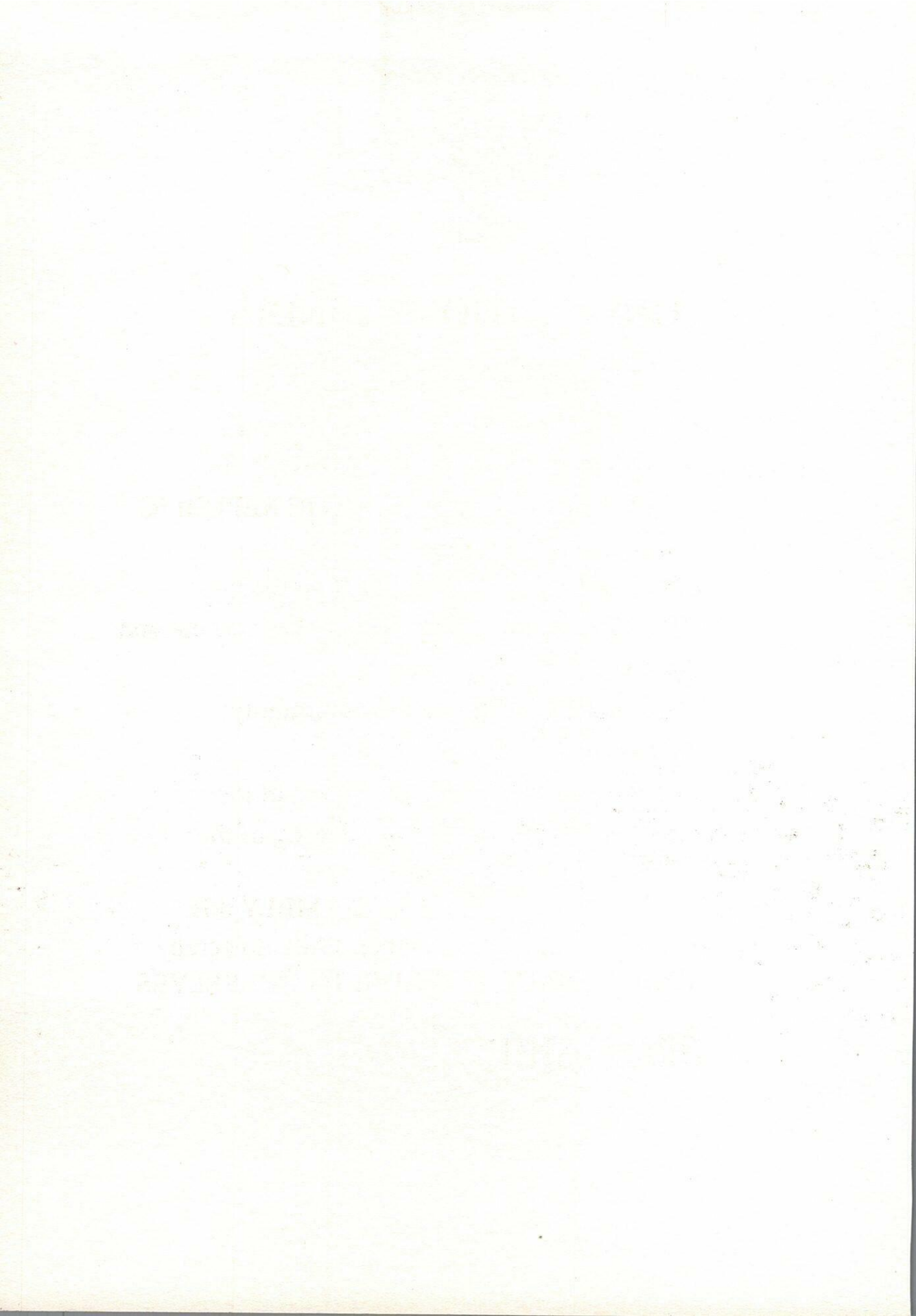


ZO TAWNG - 3

Pawl Thum Zirlai Bu



Directorate of Kok-borok & other Minority Languages
SCERT
Department of School Education
Tripura





THE CONSTITUTION OF INDIA

PREAMBLE

WE, THE PEOPLE OF INDIA, having solemnly resolved to constitute India into a SOVEREIGN SOCIALIST SECULAR DEMOCRATIC REPUBLIC and to secure to all its citizens:

JUSTICE, social, economic and political;

LIBERTY of thought, expression, belief, faith and worship;

EQUALITY of status and of opportunity;

and to promote among them all

FRATERNITY assuring the dignity of the individual and the unity and integrity of the NATION;

IN OUR CONSTITUENT ASSEMBLY this twentysixth day of November, 1949, do hereby ADOPT, ENACT AND GIVE TO OURSELVES

THIS CONSTITUTION.



THE CONSTITUTION OF INDIA

PREAMBLE

WE, THE PEOPLE OF INDIA, having solemnly resolved to constitute India into a SOVEREIGN SOCIALIST SECULAR DEMOCRATIC REPUBLIC and to secure to all its citizens:

JUSTICE, social, economic and political;
LIBERTY of thought, expression, belief, faith and worship;

EQUALITY of status and of opportunity;
and to promote among them all

FRATERNITY assuring the dignity of the individual and the unity and integrity of the NATION;

IN OUR CONSTITUENT ASSEMBLY this
twentysixth day of November, 1949, do hereby
ADOPT, ENACT AND GIVE TO OURSELVES

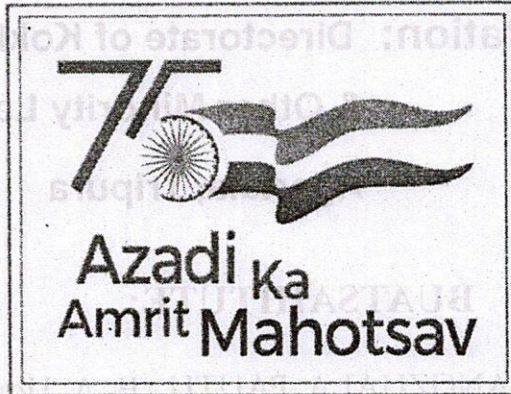
THIS CONSTITUTION.

ZO TAWNG

PAWL THUM ZIRLAIBU

CLAS-III

(KUKI-MIZO Text Book)



**DIRECTORATE OF KOK-BOROK AND OTHER
MINORITY LANGUAGES**

&

SCERT

**DEPARTMENT OF SCHOOL EDUCATION
TRIPURA**

© S.C.E.R.T., Department of School Education

First Edition : December, 2015

Reprint : December, 2016

Reprint : March, 2020

Reprint : March, 2022

**Text Book Preparation: Directorate of Kokborok
& Other Minority Languages
Agartala, Tripura**

BUATSAIHTUTE:

LALSANGZUALA PAUTU, B. A. Honours (Mizo)

LALTHANZUALA SAILO, Headmaster

Chhuahtu: S.C.E.R.T. Department of School Education

Printed at: Kalika Press PVT. LTD, Kolkata-700 006

THUHMAHRUAI

He zirlaibu hi naupangte'n zirna kawnga hma an lo sawn theihna tur leh an tuipui theih ang tura buatsaih a ni a.

Tin, he lehkhabu hi naupangte tan hriatthiam a awlsam zawk theihna turin thu mawl tê tê hman a ni bawk a. He zirlaibu chhungah hian entirna, hrilhfiahna leh a then te chu a lem te nen entir a ni bawk.

He zirlaibu siam chungchângah hian thurawn pé duh tân pêk theih reng a ni e.

Agartala, Tripura

March, 2022

Director

S.C.E.R.T., Agartala

ACHHUNGA THU AWMTE

ZIRLAI

PHEK

- | | |
|------------------------|----|
| 1. HNAM INPUMKCHATNA | 9 |
| 2. JAMPUI TLANG | 12 |
| 3. LAWMTHU SAWINA | 15 |
| 4. HRISELNA | 18 |
| 5. CHEMTATRAWTA | 20 |
| 6. SAZUK LEH UISATHIAM | 23 |
| 7. ASHOK-ROPUIA | 26 |
| 8. AWMDAN THA | 29 |
| 9. LIANDOVA TE UNAU | 31 |
| 10. NIHLAWHNA TAK TAK | 34 |

Zirlai - 1

HNAM INPUMKHATNA



India ramah kan chêng a, India ram khua leh tui kan ni. India ram hi zau tak a ni a, hnam hrang hrangte kan chêng ho a ni. Ṭawng hrang hrangte kan hmang a, ṭawng inhriat tawn lohna avangin inbiakna kawngah pawh duh angin kan inbe tawn thei lo ṭhin a, mahse India ram mi vek kan ni a, kan inhmangaih tlâng dial dial tur a ni.

India ram zau tak hi state tam tak a ṭhen a ni. Keini Tripura state-a chêngte pawh hi hnam hrang hrang leh ṭawng hrang nei kan ni. Tripura-a chêng kan nih vangin

lungrual takin kan awm ho tur a ni. Kan sakhua biak dan pawh a inang lo va, chuvangin midangte nen sakhaw biak dan kan inzahtawnsak tur a ni. Hnam hrang hrang chêng ho kan nih angin, kan hnam tih dan leh invawn dante kan inngaih pawimawhsak a, kan inzahsak tawn bawk tur a ni.

Tripura hi ram nuam tak leh hmasawn zêl turin a mi chêngte hian kan theih tawka ãan lak ãheuh hi kan tih tur a ni.

TIH TURTE

1. India ramah hian tute nge chêng?
2. India ram mi kan nih avangin engnge kan tih tur?
3. Tripura-a chêng kan ni a, engnge kan tih tur?
4. Midangte sakhua engtin nge kan ngaih ang?
5. Tripura hi hmasâwn zêl turin engnge kan tih ang?

Zirlai - 2

JAMPUI TLÂNG

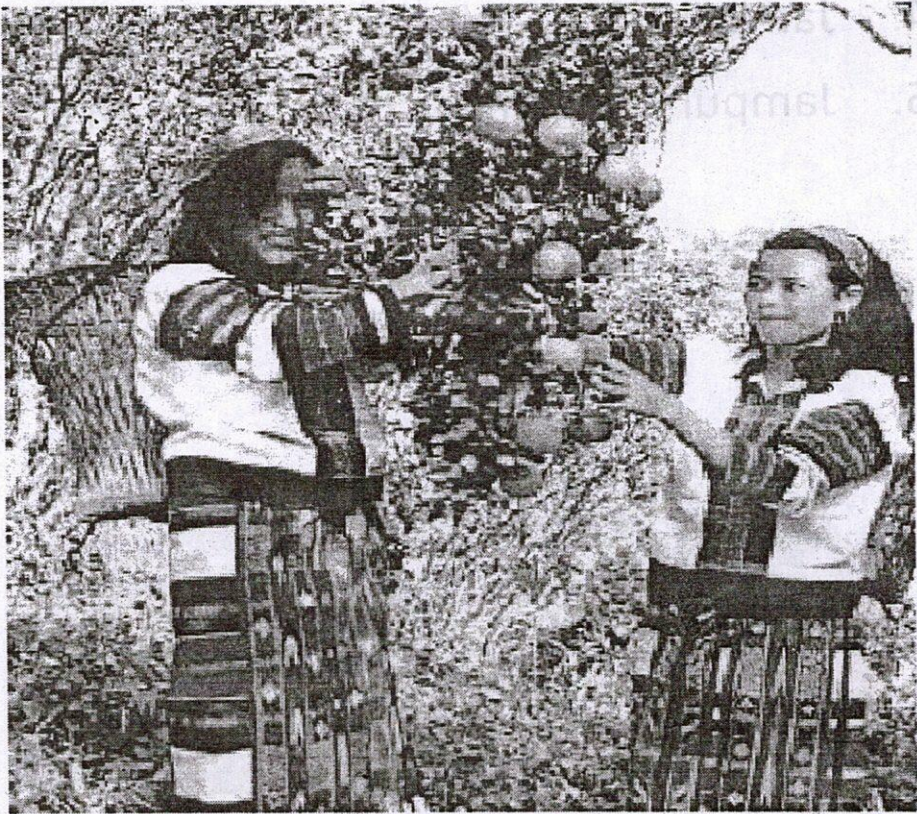


Jampui Tlâng hi Tripura hmarchhak lam Mizoram depa awm a ni. Tripura ram chungah chuan Tlângdung sâng ber. a ni. Jampui Tlâng dung hi chhim leh hmar zâwngin a awm.

Jampui Tlâng hi tun hmain Zo hnam hrang hrangten an lo luah tawh ni a hriat a ni. Jampui Tlâng hmar lamah kum 1910-ah khan Lal Dokhuma Sailo leh a khua mi tam takte chuan Hmawngchuan khua an din a, tin, chhim lamah Lal Hrangvunga Sailo leh a khua leh tui in 100 (za) zette chuan kum 1912 khan Phuldungsei khua an din bawk a, chuta țang chuan vawiin ni thlengin luah

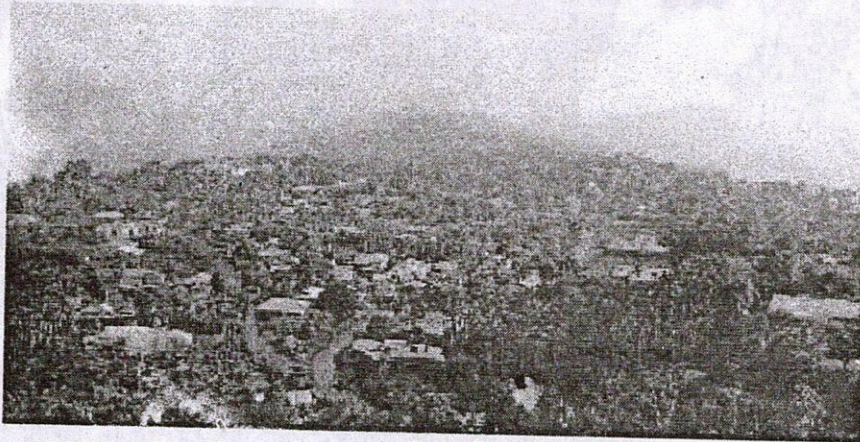
chhonzawm zel a ni ta a ni. Tunah chuan Jampui Tlâng a mi chengte hi Mizo, Reang leh Chakma te an ni tlangpui.

Jampui Tlâng hi thei leh thlai chi hrạng hrạng chin theihna hmun a ni a, mi tam takin serthlum huan te, kuhva huan te an siam a ni. Lo neihna eizawng mi tam tak an awm bawk. Jampui Tlâng hi hmun nuam tak a ni.



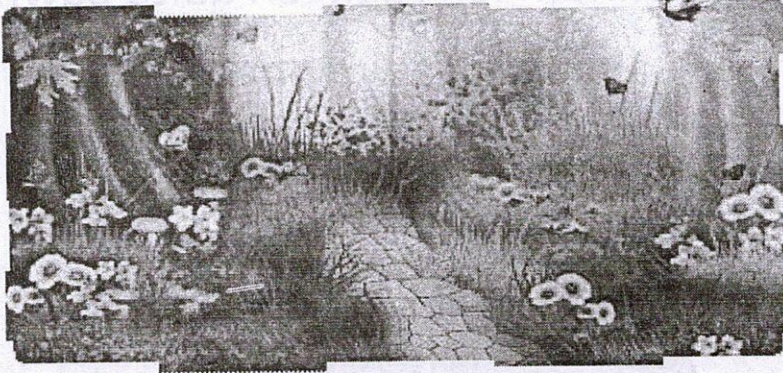
TIH TURTE

1. Jampui Tlâng hi khawi hmunah nge a awm?
2. Hmawngchuan khua din kum leh a dintu hming sawi rawh.
3. Phuldungsei khua din kum leh a dintu hming sawi rawh.
4. Jampui Tlânga mi chengte chu tute nge?
5. Jampui Tlangah eng huante nge an siam?



Zirlai - 3
LAWMTHU SAWINA

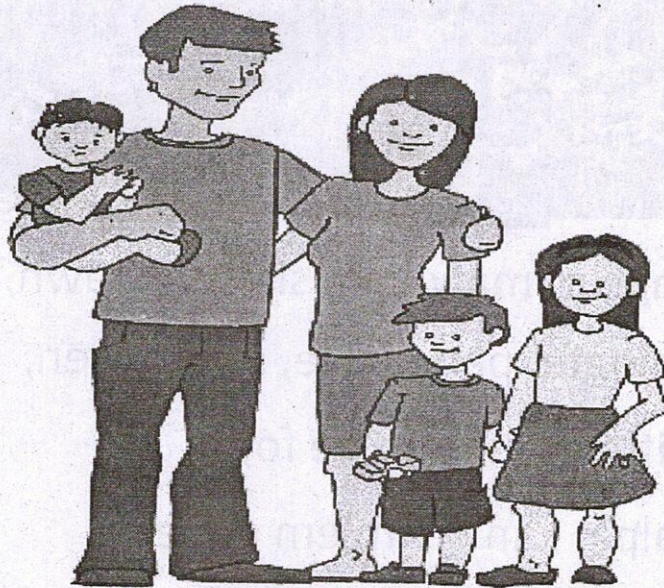
Pi Nuchhungi



1. Engkim mawi min siamsak tawh,
Thingte, pangparte, savate nen,
Nitin ei tur min pe fo;
Lalpa, kan lawm em em e.



2. Engkim mawi min siamsak tawh,
Ni leh thla leh arsate nen,
Chhum leh ruah leh daite pawh;
Lalpa, kan lawm em em e.



3. Engkim hlu min siamsak tawh,
Nu leh pa leh unaute nen,
Nitin min zirtirtu pawh;
Lalpa, kan lawm em em e.

TIH TURTE

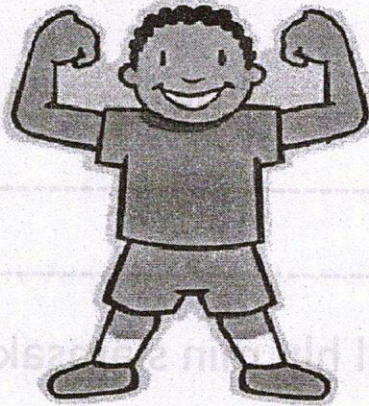
1. Pathianin min siamsak i hriat pasarih ziak rawh.

2. Pathianin thil hlu min siamsak pathum ziak rawh.

3. Tuin nge ei tur min pe?

Zirlai - 4

HRISELNA



Damdawi inah i kal tawh em? I kal chuan damlo tam tak i hmu thin ang. Damlote chu an hlim lo êm êm a ni. Mi tam takte chu an taksa an enkawl that loh vangin an damlo thin a. Kan damloh chuan kan taksa a châu a, kan rilru pawh a chak lo thin a ni. Kan nat fo chuan kan dam rei thei lo mai ang. Kan lo hrisel theih nan hrisel loh theihna kawng 10 (sawm) te hi kan hre reng fo tur a ni.

1. Kan silhfente a balh chuan kan damlo thei.
2. Kan taksate a balh chuan kan damlo thei.
3. Kan kut leh tinte a balh chuan kan damlo thei.
4. Kan hâte a balh chuan kan damlo thei.

5. Kan thil ei leh inte a balh chuan kan damlo thei.
6. Thil kan ei puar lutuk chuan kan damlo thei.
7. Kan infiam hah lutuk chuan kan damlo thei.
8. Zannah kan men rei lutuk chuan kan damlo thei.
9. Ni sa deuh emaw khawvawt deuh emaw kan tuar reng chuan kan damlo thei.
10. Natna kai theih vei bula kan awm reng chuan kan damlo thei.

Bazar kan kalin thil kan leiin kan ei mai mai tur a ni lo. Tho bawm hnute kan ei chuan kan damlo thei a ni. Kan thil eite chip takin kan thial fo tur a ni. Thil thar leh thianghlim ei kan tum fo tur a ni.

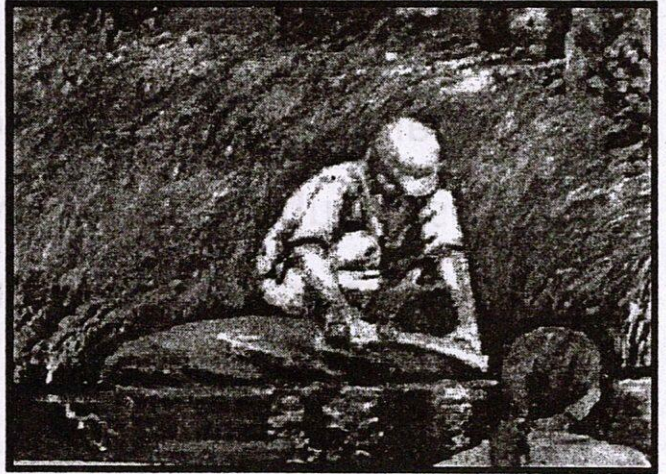
TIH TURTE

1. Damdawi inah tute nge kan hmuh thin?
2. Engvangin nge mi tam tak an damloh thin?
3. Eng thilte nge ei kan tum fo tur?

Zirlai - 4

CHEMTATRAWTA

Vawi khat chu lui tê-ah hian Chemtatravta hian chem a tât râwt râwt a. Kaikwang hi a lo kal a, a chep ta hlawk mai a. Chemtatravta chu a thinur ta a, a bula khaum zâmna rawpui



chu a sat chhum ta hmawk mai a. Khaum rah chu a tla a, a hnuaia ramâr ngumah chuan a deng dawp mai a. Ramâr chu a thin a rim a, taivang bu a thaidarh ta a. Taivang chu a thin a rim a, sanghal a seh a. Sanghal chu a thin a rim a, bâk awmna chângel a tai tlu a. Bâk chu a thin a rim a, sâi hnarah a lut a, sâi chu a thin a rim a, Pitarte in a chil chhia a. Pitarte chu a thin a rim a, tuikhur hnarah a e a.

Mite chuan pitarte chu an hau a,

“Pitarte, engah nge tuikhur hnârah i êk?” an ti a.

Pitarte chuan, "Engah nge sâiin ka in a chil chhiat vei," a ti a.

"Engah nge Sâia, Pitarte in i chil chhiat?," an ti a.

"Engah nge ka hnarah bâk a luh vei" a ti a.

"Engah nge Bâka, sâi hnarah i luh?" an ti a.

Bak chuan, "Engah nge ka awmna changel sanghalin a tihtluk vei," a ti a.

"Engah nge Nghala, bâk awmna changel i tai tluk?" an ti a.

Sanghal chuan, "Engah nge taivangin min seh vei," a ti a.

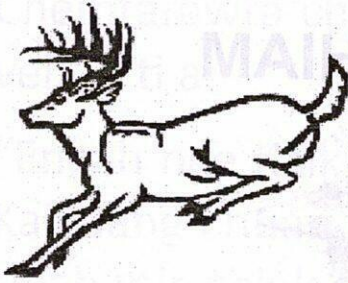
"Engah nge Taivang, sanghal i seh?," an ti a.

Taivang chuan, "Engah nge ramarin ka bu a thai darh vei," a ti a.

"Engah nge Ramâr, taivang bu i thai darh" an ti a.

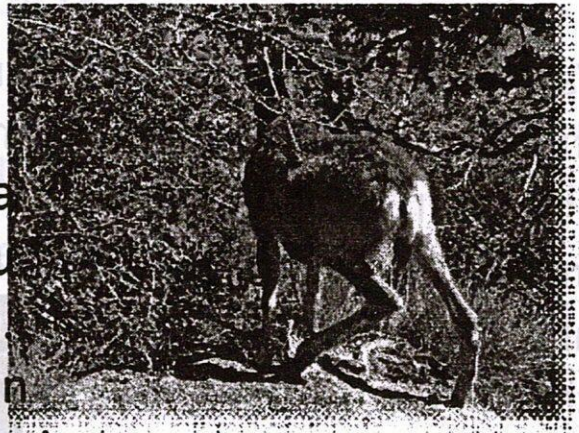
Ramâr chuan, "Engah nge ka ngumah khaumin a den vei," a ti a.

"Engah nge Chemtatrawt, khaum zamna rawpui i sah chhum?" an ti a.



êm chuan chak takin a tânpui ta daih mai a. Mahse, nakinah chuan a ki hreu chu hnimbuk a hruiah chuan a tâng ta a. A talchhuak thei ta hauh lo mai a, uisathiam rual chuan an rawn umphak a, an seh hlum ta a.

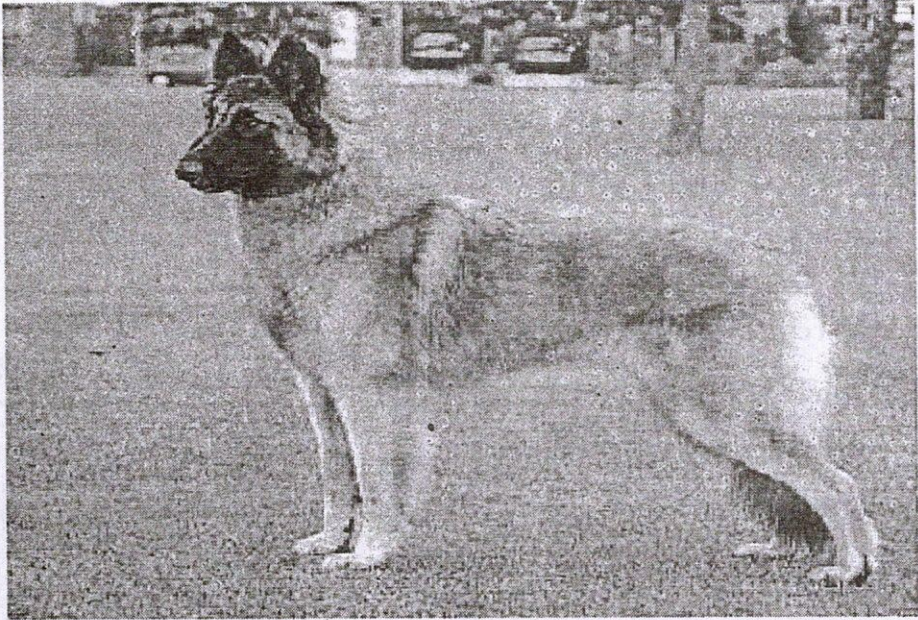
A thih dawn chuan, "Ka chhuan êm êm ka ki hreu vângin ka thi dawn ta a ni. Ka sit zawk ka ke kha chuan min chhandam thei si a," a ti a.



Kan thil chapopui hi min timualphotu leh min tichhetu an ni fo thin. Kan sit zawk thilte hian t angkaina an nei ve tho mai.

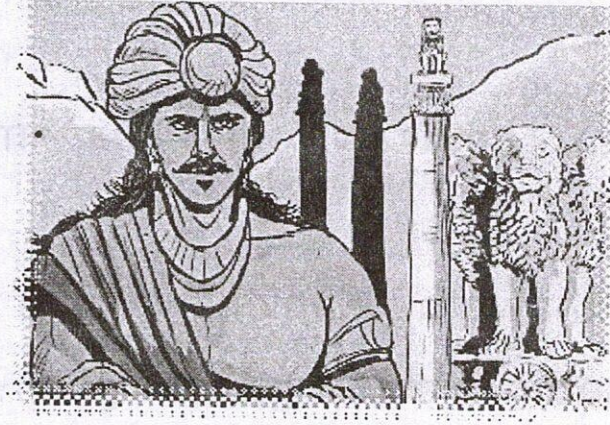
TIH TURTE

1. Sazuk i hmu tawh em? A pianhmang han sawi teh.
2. He thawnthu hian engnge min zirtir a tum?
3. Uisathiam chu engtihna nge ni?



Zirlai - 7

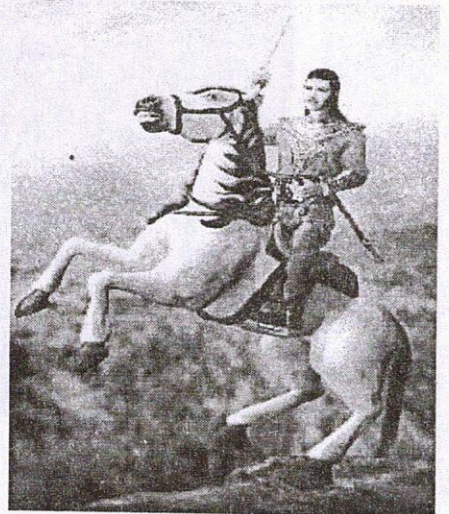
ASHOK – ROPUIA



Kum B.C. 300 lai vel khan India ramah hnam ropui tak, Maurya hnam an lo lal a, an lal ropui ber chu Chandragupta a ni. India ram zawng zawng deuh thaw a awp a. Mahse, ram pakhat Kalinga, tuna Orissa an tih tak erawh a hneh thei lo va.

Chandragupta thih hnu chuan a fapa Bindusava a lo lal a, kum 25 lai ro a rel hnuah a boral ve leh ta a, a fapa Ashoka a lo lal leh ta a. Hei hi BC 272 lai vel kha a ni.

Ashoka hi a lo lal tirh chuan

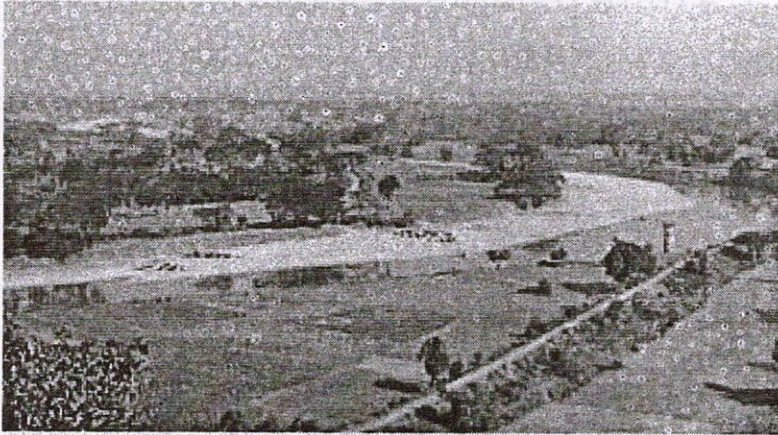


nunrawng tak a ni a, a mite pawhin an ngaina vak lo va. Kum kua a lal hnuah chuan Kalinga chu a rûn ve ta a. Mihring nuai khat lâi a that a, a hneh thei ta a. Mahse, Ashoka chu a hlim hauh lo mai; Mi tam tak thi leh hliam a hmuh chuan a khawngaih ta êm êm mai a. Tumah do tawh lo turin a intiam ta hial a. Bhudha sakhua rinawm takin a zui ta a. Rannung rêng rêng that lo turin thupek a chhuah a. Bhudha leh a zirtirte ruhro leh thil hlui dah that nan inte a sa a, chu chu 'Stupa' an ti.



Kawng tihlim turin thingte a phun a, ran leh mihring in turin tuichhunchhuahte a siam a. Ngilnei taka kum 40 lai ro a rel hnuah BC 232 khan a thi ta a.

Khawvel lalte zingah pawh^o lal ropui berte zing a mi a ni a. India ram chuan a ngaisâng êm êm a. Sorkar chhinchhiahna atan a lungphun pakhat tawhlair leh sakeibaknei lem chu hman a ni a. Chu chu 'Ashoka chakra' an ti a ni.

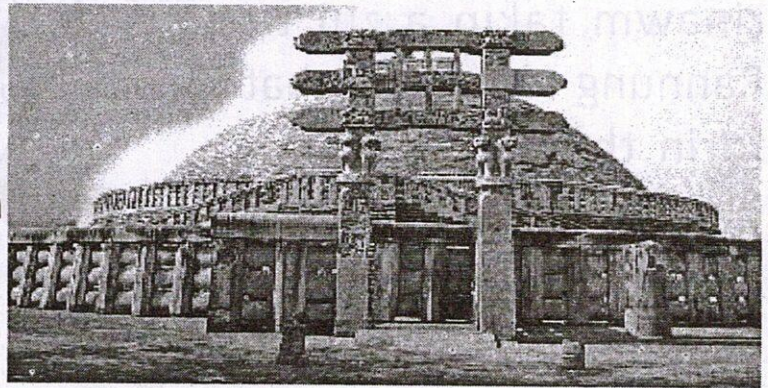


KALINGA HMUN



Ashoka chakra

Stupa



TIH TURTE

1. Ashoka pa hming sawi la, eng hñam nge anih?
2. Ashoka kha engtik kumah nge a thih?
3. Ashoka'n indo a bansan chhan sawi rawh.

Zirlai - 8

AWMDAN ṬHA

1. Nu leh pa thu zawm tur
a ni.

2. Ṭawngkam mawi taka
mi biak tur a ni.

3. Mi thil kan dil chuan,
“Khawngaih takin min
pe thei ang em?” tih
ṭhin tur a ni.

4. Miin thil min pek chuan “Ka lawm e” tih zel tur
a ni.

5. Miin an biak che chuan mha takin chhân tur a ni.

6. Mi i tihpalhin, “Ka tihpalh a ni. Min ngaidam
rawh” tihzel tur a ni.

7. Mi zinga i khuhin emaw, i hahchhiauin emaw
chuan i kê hup zêl rawh.



8. Mi an inbiak lâiin biak ve tumin va tibuai suh.
9. Sikula zirtirtuin thu a zawh che chuan dingin chhâng ang che.
10. Thiante nen inkawmngaih dâal dâal tur.

TIH TURTE

1. Awmdan tha panga ziak rawh.
2. Tute thu nge zawm tur?
3. Miin thil an pêk che-in engtia chhân tur nge?
4. A hnuaia hmun âwlte hi dah khat rawh.
 - (a) Thiante nen inkawmngaih _____ tur.
 - (b) Nu leh pa thu _____ tur a ni.
 - (c) Miin an biak che chuan, tha takin _____ tur a ni.

Zirlai - 9

LIANDOVATE UNAU

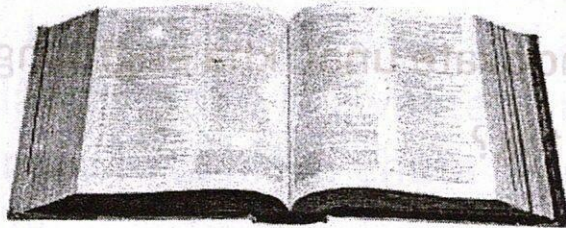
Hman lai hian Liandova leh a nau Tuaisiala hi an awm a, an naupan laiin an pa a thi a, an pa a thih hnuin an nu chuan pasal dang a neihsan a. Tichuan, an unau chauhvin an awm ta a. An rethei ta êm êm mai a. Mite pawhin an tiduhduh hlê thin. Ei turte, kawr hâk turte pawh an nei lo.



Vawikhat chu Liandova chuan mîm fang khat hi a chhar a, amaha ei a duh lo va, a nau Tuaisiala nen an inphel a ni. Ei tur miin an pêk apiang chu an ei dîn zêl thin.

Ni khat chu Tuaisiala'n ramhnuaiah Saphai lianpui hi a hmu a, an khuaa mite chu a hrilh a, Saphai chu an that ta a. Liandovate unau chu a sa an pe ve phal lo va, a pumpui chauh an pe a, a sa an chan ve loh avangin Liandova chu a ɽap a ɽap a. Mite chuan, "A pumpui kha

Zirlai - 10
NIHLAWHNA TAK TAK
Sam Number 1-na



Mi suaksualte remruat anga awm ngai lo va,
Misualte kawng pawha ding ngai lo va,
Hmusittute thutphah pawha thu ngai lo mi chu,
a eng a thawl e.

A lâwmna chu LALPA dânah a ni zawk a;

A dân thu chu achhûn azânin a ngaihtuah thin.

Ani chu tuiluang kêanga thingphun,

A huntêa rah thin,

A hnah pawh uai ngai lo ang hi a ni a;

A thiltih apiang chu a hmuingil zêl ang.

Mi suaksualte erawh chu chutiang an ni lo va;

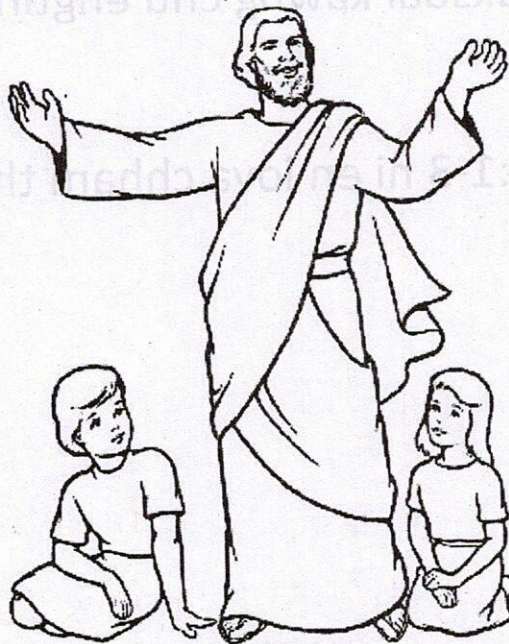
Buh sî thliin a len bo ang hi an ni zâwk.

Chuvangin, mi suaksualte chu rorelna hmah chuan
an ding thei lo vang a,

Mi sualte pawh mi felte inkhawmnaah chuan an
ding thei hek lo vang.

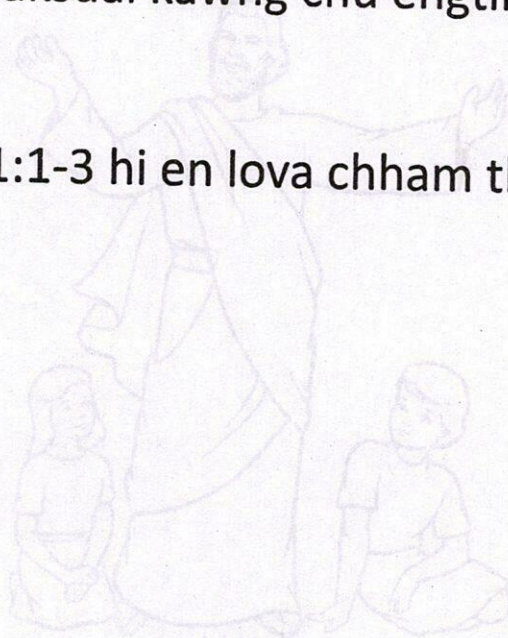
LALPA chuan mi felte kawng chu a hre si thin a,

Mi suaksualte kawng erawh chu a boral ang.



TIH TURTE

- (a) Mi suaksualte chu tute nge ni?
- (b) Mi felte chu tute nge ni?
- (c) Tute nge rorelna hmaah chuan ding thei lo ang?
- (d) LALPAN tute kawng nge a hriat thin?
- (e) Tute thiltih nge hmuingil zel ang?
- (f) Mi suaksual kawng chu engtin nge a awm ang?
- (g) Sam 1:1-3 hi en lova chham thiam tur a ni.





**Keep your school
and home clean.
Keep your house
and School green.**

